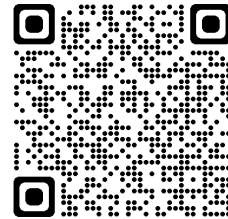
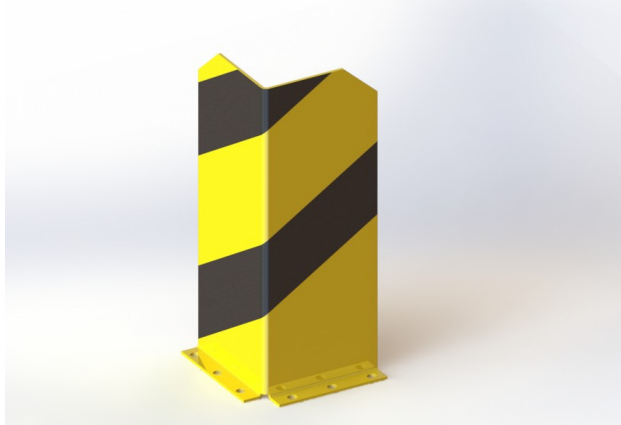




Technical sheet



Pallet racking corner protector – DP QRL02

PROPERTIES:

Material: steel

Colour: yellow / reflective black

Handling equipment: forklift

Impact resistance: high

Height: 600 mm

Product dimensions: 200 x 200 mm

Metal sheet thickness: 5 mm

Weight: 10 kg

Surface treatment: powder paint

Suitable use: indoor and outdoor areas

Possibility of disposal: recycling

PRODUCT DESCRIPTION:

The pallet racking corner protector is made of S235 steel. Surface treatment is solved with powder paint. Yellow traffic colour RAL1023 increases the visibility of the protector and warns of obstacles, which contributes to greater safety. The steel feet of the protector are made of 5 mm thick sheets. Fixing holes Ø 15 mm. The post has black reflective stripes.

USE:

The pallet racking corner protector is used to protect rack columns in production halls and warehouses.